

Chinking and Specialty Sealants

Perma-Chink®

The Original Synthetic Chinking for Log Homes

Perma-Chink log home sealant started the company and remains the product for which we are known, even though we have developed a complete system of products for log home care and maintenance. *Perma-Chink* looks like traditional mortar. It stretches, compresses and tightly adheres to log surfaces to make your log walls weather tight and attractive. It is still the easiest chinking to apply to your log home.

- Highly elastic
- Use for interior and exterior sealing
- Seals gaps 1 inch or wider
- Maintenance free
- Very low VOC formula
- 10-year warranty
- Compatible with all Perma-Chink Systems wood care products

Perma-Chink Coverage Rates

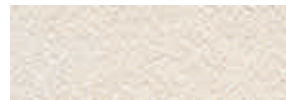
Gap Width	Linear Feet per Pail
1/2"	Use Energy Seal
3/4"	Use Energy Seal
1"	385'
1-1/2"	256'
2"	192'
2-1/2"	154'
3"	127'
3-1/2"	110'
4"	96'
4-1/2"	85'
5"	76'
6"	63.5'

1 Pail = approximately fifty five 11 oz. tubes

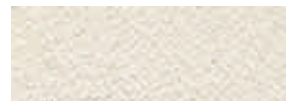
1 Pail = approximately twenty 30 oz. tubes



White #207



Stone #211



Light Gray #212



Sandstone #215



Beige #216



Tan #219



Brown #223



Medium Gray #224

Color representations are as close as possible to actual colors. Application techniques and other factors will affect the actual color when finished. We supply samples for evaluation.

Surface Preparation:

Must be clean and dry and free of oils and wax. Proper backing materials and/or bond breaker must be used.

Application Rates:

See coverage rate table.

Application Temperature:

40° F to 90° F

Application Methods:

Chink Pump.
Bulk loading gun.
Caulk gun.
Application bags.

of Coats:

Apply at 3/8" thickness. Do not apply in direct, hot sunlight.

Drying Time:

Skins over in 20 minutes.
Complete curing may take 3 to 8 weeks depending on temperature and humidity.

Clean up:

Soap and water.

Packaging:

11 oz. tubes.
30 oz. tubes.
5 gallon pail.

Storage/Shelf Life:

Freeze/thaw stable.
1 year.



Washington 1-800-548-1231; Tennessee 1-800-548-3554; Montana 1-800-479-7090;
Minnesota 1-877-244-6548; Colorado 1-800-433-8781
www.permachink.com



LOG HOME SEALANT

- Provides a weather-tight between logs.
- Excellent for new construction or restoration.
- Remains flexible even in extreme climates.
- Authentic traditional appearance.
- Easy to apply.
- Soap and water clean up.
- 5 year limited replacement warranty.

Made in USA

CAUTION: DO NOT TAKE INTERNALLY

Directions For Use

STEP #1: INSPECTION

If applying to an older home, check for signs of rot and decay. Remove and replace or repair deteriorated wood. Contact any Perma-Chink Systems office for information about wood repairs.

STEP #2: SURFACE PREPARATION

All surfaces should be clean, dry and free from oil, dirt or other foreign matter. Use appropriate materials to clean and prepare surfaces. Perma-Chink Log Home Sealant is best applied after the home has been stained. We strongly recommend the use of any LIFELINE™ brand exterior stain and topcoat. If an oil-based stain has been applied, allow it to dry at least two weeks before applying Perma-Chink Log Home Sealant.

STEP #3: BACKING MATERIALS

Perma-Chink Log Home Sealant should only be applied over approved substrates. When selecting the width of Grip Strip to use on round logs, the joint width should be approximately 1/6" the diameter of the logs (10" diameter logs; 10" ÷ 6 = 1.67"). Obtain a copy of our "Log Home Sealant Application Guide" from any Perma-Chink Systems location for information about suitable backing materials and substrates.

STEP #4: APPLICATION

Do not apply in direct sunlight or when the temperature is less than 40° F. Perma-Chink Log Home Sealant may be applied with a bulk loading caulk gun, grout bag or high volume chink pump. Hold the applicator tip firmly against the back surface and apply. If several beads of chinking are required to fill a gap, place them close together to avoid entrapped air. Apply enough sealant to maintain a wet thickness of at least 5/16" and no more than 1/2" across the entire joint after tooling. Only apply as much sealant as you can tool in about 15 minutes. Once the joint is filled, spray with a light mist of water and tool smooth with a trowel or spatula. If the width of the trowel is close to the width of the joint, the smoothing process will be easier. Make sure there is good contact between the Perma-Chink and the exposed edges of the top and bottom logs. If you are a first time applicator, start work on a less visible area until you become familiar with the process.

STEP #5: DRYING AND CURING TIME

Protect freshly applied Perma-Chink from direct rainfall for a minimum of 24 hours. When draping a wall with plastic film, allow some airspace between the wall and the plastic to facilitate drying. Sheets of cardboard may also be use to cover newly applied Perma-Chink to prevent "chinking inspectors" from leaving finger dents in the uncured chinking.

Drying time and curing time are two entirely different terms. In warm or hot weather, Perma-Chink will begin to skin over in as little as ten minutes while a complete cure may take three to four weeks. Cooler weather will slow both the drying time and curing process.

STEP #6: CLEANUP

Clean area and equipment immediately with warm, soapy water before the Perma-Chink dries. For removing Perma-Chink that has dried, soften with alcohol and then clean with warm water. Please do not pollute our environment. Dispose of containers and unused material in accordance with local, state, and federal regulations.

STEP #7: MAINTENANCE

Periodic cleaning with an appropriate cleaner such as Log Wash™ will clean off dust and dirt and accentuate the beauty of your home. We recommend that log walls be washed down at least twice a year. Small rips and tears may be repaired using a bead of Perma-Chink and a damp short bristled brush to blend it in with the surrounding area. Tears greater than one foot long should be cut out and the chinking replaced.

STEP #8: STORAGE

Store Perma-Chink out of direct sunlight and **protect from freezing**. Although Perma-Chink is freeze-thaw stable, if the product is accidentally frozen, allow to thaw, mix well and check for suitability of use before applying.

Request a copy of our "Log Home Sealant Application Guide" from any Perma-Chink Systems office for additional information about applying and maintaining Perma-Chink Log Home Sealant.

Perma-Chink Log Home Sealant Limited Five Year Warranty

Perma-Chink Systems, Inc. warrants that when Perma-Chink Log Home Sealant is applied according to the label directions that (1) Perma-Chink Log Home Sealant will not pull away from log surfaces and (2) Perma-Chink Log Home Sealant will remain elastic and not tear when subjected to normal joinery movement for a period of five (5) years from the date of purchase.

This five year warranty applies only to Perma-Chink Log Home Sealant that has been applied over approved substrates and does not apply to application over existing chinking. Contact your nearest Perma-Chink Systems location for information regarding approved substrates and application methods.

Remedy under this limited warranty is limited to the replacement of product that does not comply with specifications and specifically excludes consequential damages, labor and other associated costs or products. No other warranties are expressed or implied. Warranty does not apply to specially formulated product or colors. To obtain replacement material, contact any Perma-Chink Systems location. Perma-Chink Systems, Inc. reserves the right to inspect any structure before product replacement.

This transferable limited warranty applies only in the United States and Canada and is limited to product replacement as set forth above.

Material Safety Data Sheet



IDENTITY (As Used on Label and List)
Perma-Chink

Section I

Manufacturer's Name Perma-Chink Systems, Inc.	Emergency Telephone Number: CHEMTREC 1-800-424-9300
Address (Number, Street, City, State, and ZIP code) 1605 Prosser Road	Telephone Number for Information: 865-524-7343
Knoxville, TN 37914	Date of Preparation 8/17/09
Preparer's Name Sean Gahan	Signature of Preparer (optional)

Section II – Hazardous Ingredients/Identity Information

Hazardous Component (Specific Chemical Identity, Common Name(s):	CAS #	OSHA / PEL	ACGIH TLV	Other Limits Recommended	% (optional)
Aliphatic Hydrocarbon	64742-88-7	300 ppm			

Section III – Physical/Chemical Characteristics

Boiling Point: 212 °F	Specific Gravity (H ₂ O = 1) 1.31 – 1.35
Vapor Pressure (mm Hg.) N/A	Melting Point N/A
Vapor Density (Air = 1) > 1	% Volatile (Volume) 15-25
Solubility in Water Mixes with water	Evaporation Rate (Water = 1) < 1
Appearance and Odor Paste in various colors. Slight latex odor.	VOC: 78 g/L

Section IV – Fire and Explosion Hazard Data

Flash Point (Method Used) N/A	Flammable Limitations	LEL 1.3%	UEL 8.7%
Extinguishing Media For dried solids use water, CO ₂ , foam or dry chemical.			
Special Fire Fighting Procedures Water may be used to cool container that are exposed to heat			
Unusual Fire and Explosion Hazards Pressure may build if containers are exposed to heat.			

Section V – Reactivity Data

Stability	Unstable		Conditions to Avoid
	Stable	✓	
Incompatibility (Materials to Avoid)			None Known
Hazardous Decomposition or Byproducts			None Known.
Hazardous Polymerization	May Occur		Conditions to Avoid
	Will Not Occur	✓	None Known

Section VI – Health Hazard Data

Routes of Entry Inhalation No Skin Yes Ingestion Yes Eye Contact Yes

Health Hazards (Acute and Chronic)

May cause irritation to eyes, skin, nasal passages and throat.

Carcinogenicity NO NTP NO IARC Monographs NO OSHA Regulated NO

No long-term adverse effects are known.

Signs and Symptoms of Exposure: Persistent skin redness and irritation.

Medical Conditions: None known

Emergency and First Aid Procedures:

Eye contact: Flush with large quantities of clean water for at least 15 minutes. Seek medical attention if irritation persists.

Ingestion: Do not induce vomiting. Dilute by drinking large quantities of water or milk. Consult a physician.

Skin contact: Wash affected area with warm water and soap. Seek medical attention if irritation persists.

Inhalation: Get fresh air. Seek medical attention if irritation persists.

Section VII – Precautions for Safe Handling and Use

Steps to be taken in Case Material is Released or Spilled

Contain spill with inert material. Do not allow material or washings to enter waterways.

Waste Disposal Method

Dispose of material in accordance with all applicable Federal, State, and Local regulations.

Precautions to be taken in Handling and Storing

Read and Observe all product label instructions. Protect product from freezing. KEEP OUT OF REACH OF CHILDREN.

Other Precautions

Section VIII – Control Measures

Respiratory Protection (Specify Type)

Wear NIOSH approved organic vapor respirator if TLV exceeded..

Ventilation Local Exhaust

Provide local exhaust to keep TLV (Section 2) below acceptable limits .

Mechanical (general)

Special

Other

Protective Gloves

None for normal use.

Eye Protection

Goggles or safety glasses recommended.

Other Protective Clothing or Equipment

None required with normal use.

Work/Hygenic Practices: Wash hands after using or before handling food or drink.

The information contained herein is, to the best of Perma-Chink Systems, Inc. knowledge, accurate as of the data indicated. Since the information contained herein may be applied under conditions beyond our control and with which we may be unfamiliar, and since data made available subsequent to the date hereof may suggest modifications of the information, we do not assume responsibility for the results of its use. This information is furnished on the condition that the person receiving it shall make his own determination as to the suitability of the material for his particular purpose and on the condition that he assumes the risk of his use thereof.